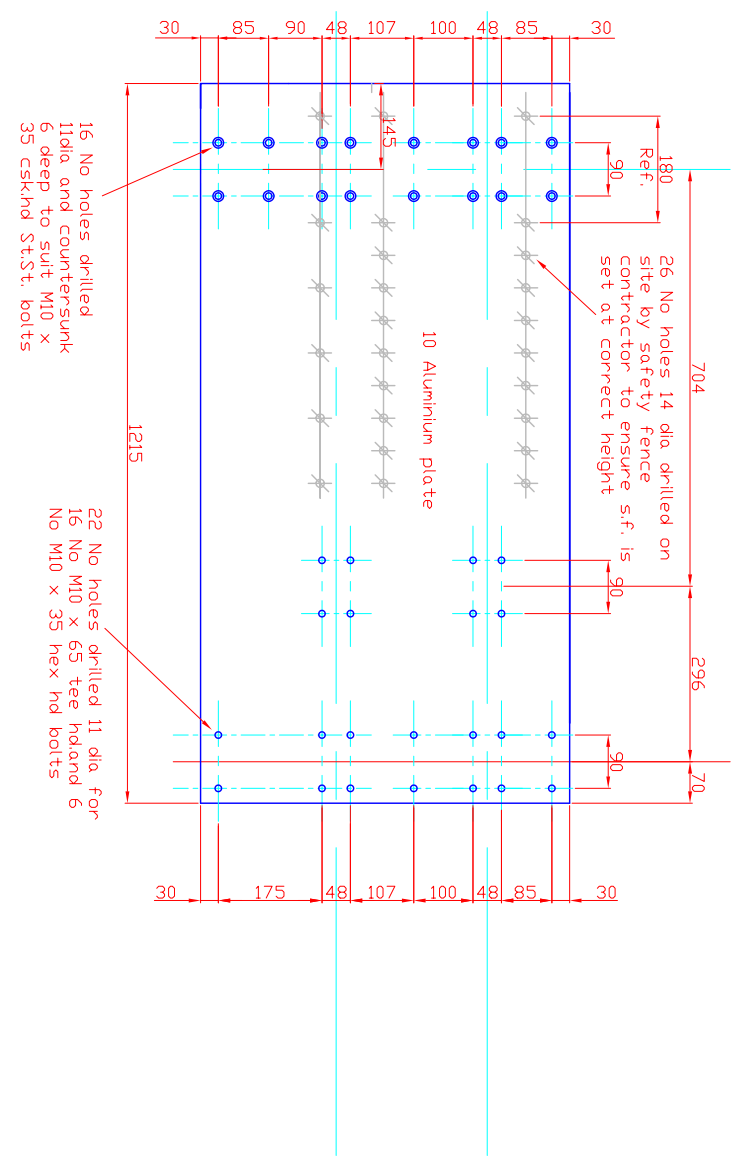
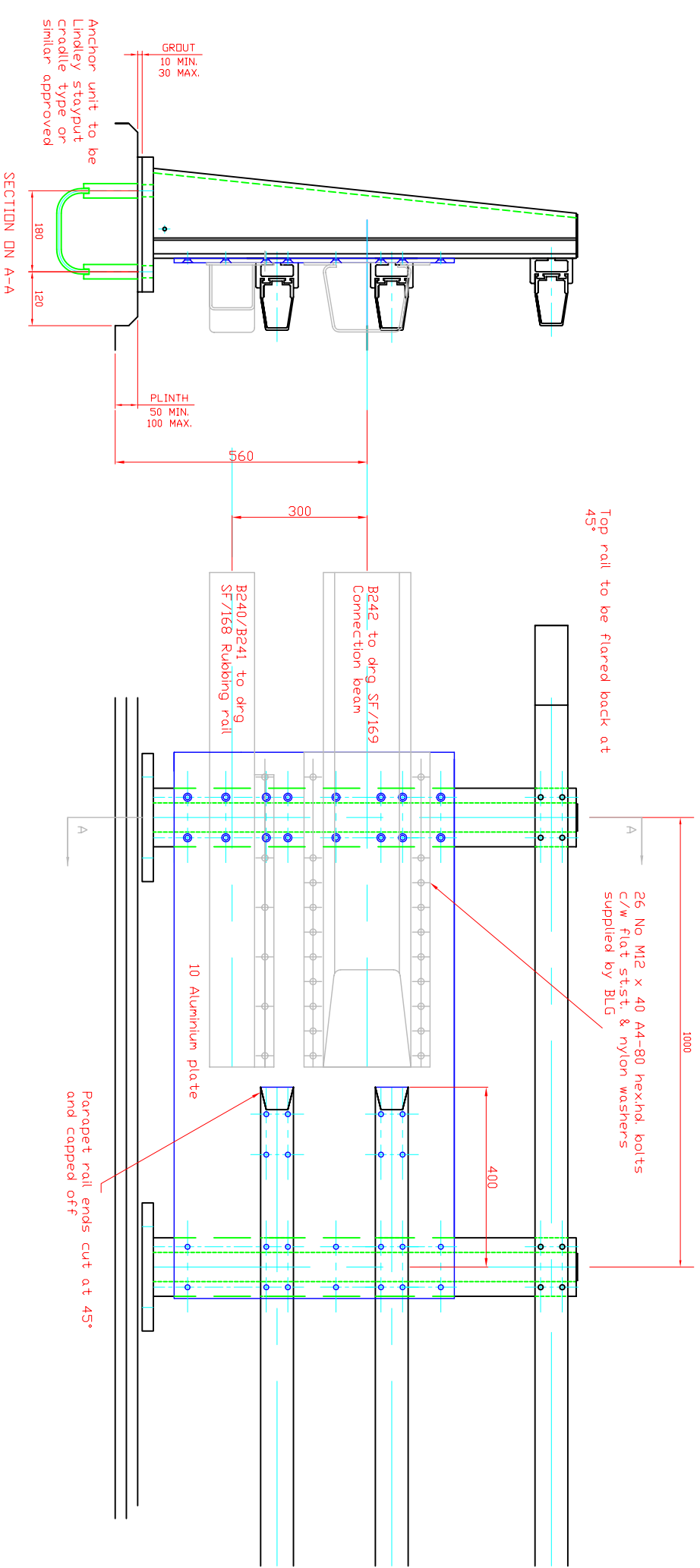


WELDING SYMBOLS	
	WELD ALL GROOVE
	WELD ALL GROOVE
	WELD ALL GROOVE
	WELD ALL GROOVE
	WELD ALL GROOVE
	WELD ALL GROOVE
	WELD ALL GROOVE
	WELD ALL GROOVE
	WELD ALL GROOVE
	WELD ALL GROOVE
	WELD ALL GROOVE
	WELD ALL GROOVE
	WELD ALL GROOVE
	WELD ALL GROOVE
	WELD ALL GROOVE
	WELD ALL GROOVE
	WELD ALL GROOVE
	WELD ALL GROOVE
	WELD ALL GROOVE
	WELD ALL GROOVE
	WELD ALL GROOVE
	WELD ALL GROOVE
	WELD ALL GROOVE
	WELD ALL GROOVE
	WELD ALL GROOVE
	WELD ALL GROOVE
	WELD ALL GROOVE
	WELD ALL GROOVE
	WELD ALL GROOVE
	WELD ALL GROOVE

MACHINING NOTES	FABRICATION NOTES
MACHINE WORK SHOWN BY DIMENSIONS UNLESS OTHERWISE SPECIFIED UNLESS OTHERWISE INDICATED, & OUTSTANDING	TOLERANCES UNLESS SPECIFIED OTHERWISE & UNLESS OTHERWISE INDICATED, & OUTSTANDING

WELDING SPECIFICATION
IF IN DOUBT, ASK.

DRAWING NOT TO BE SCALED.



General Notes

1. This safety fence connector complies with the requirements of Highway construction detail drawings GA/140 to GA/147 inclusive
2. Shear plate to be handed for departure end of parapet.
3. 14 dia holes for DBB connection beam and rubbing rail to be drilled on site by safety fence contractor to ensure the DBB is set at the correct height
4. Interface between the aluminum shear plate and connection plate and rubbing rail connection piece to be treated with zinc chromate paint or protected by plastic tape or gasket

BALMER LINDLEY GROUP LTD
 Drapery Vale Enterprise Park
 Sandhurst
 North Lindenhall, DN15 6XW
 Tel: 01724 289119 Fax: 01724 281478

TITLE:
 Parapet Types N1 & N2 to BS EN 1317
 General Arrangement & Details of safety fence connector
 Phoenix Parapet System

REV.	DATE	REMARKS	SIG.

ORDER No.:	MATL.:	DRAWN: M. Teal	CHECKED: G.D	CHECKED DATE:
ISSUE DATE:	PROJECTION:	DATE: April 2006	SCALE: Not to Scale	APPROVED:
		DRG NO.:	BLG / PHO / 10	