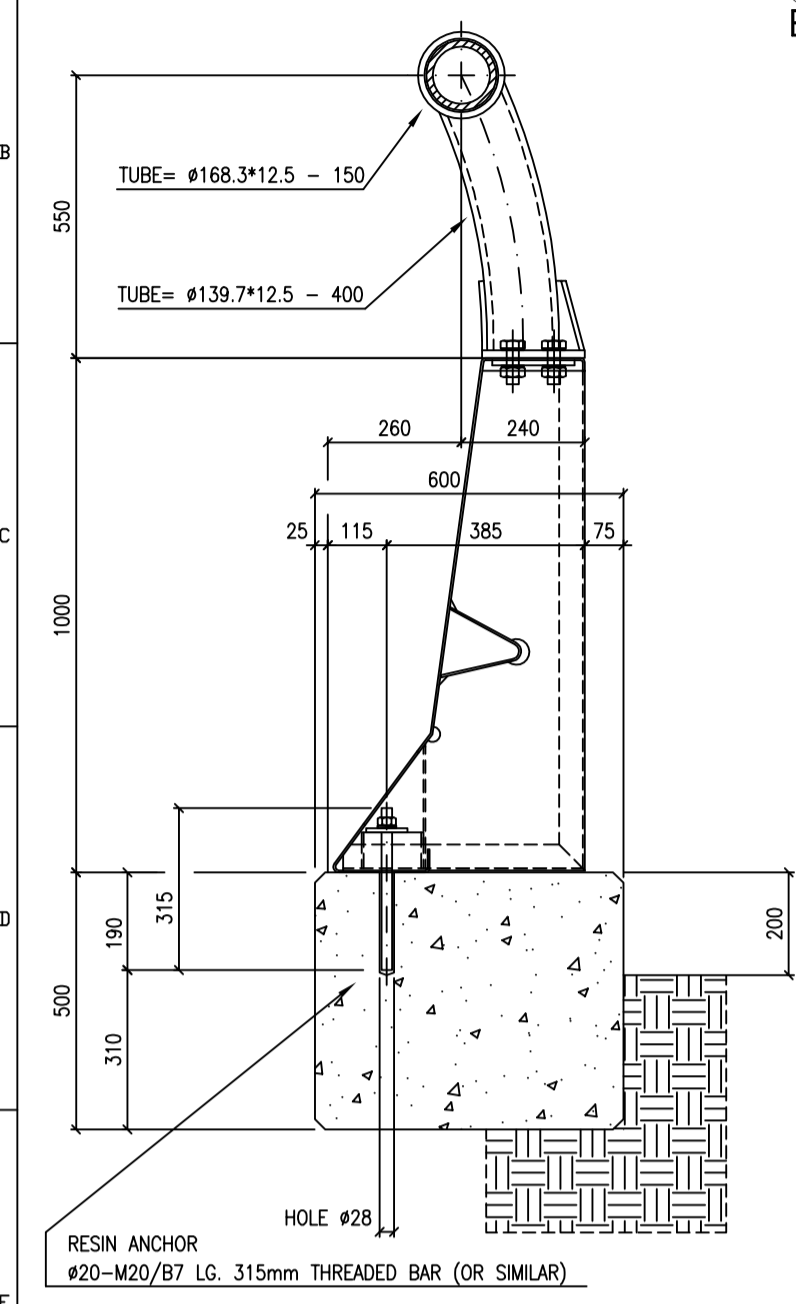
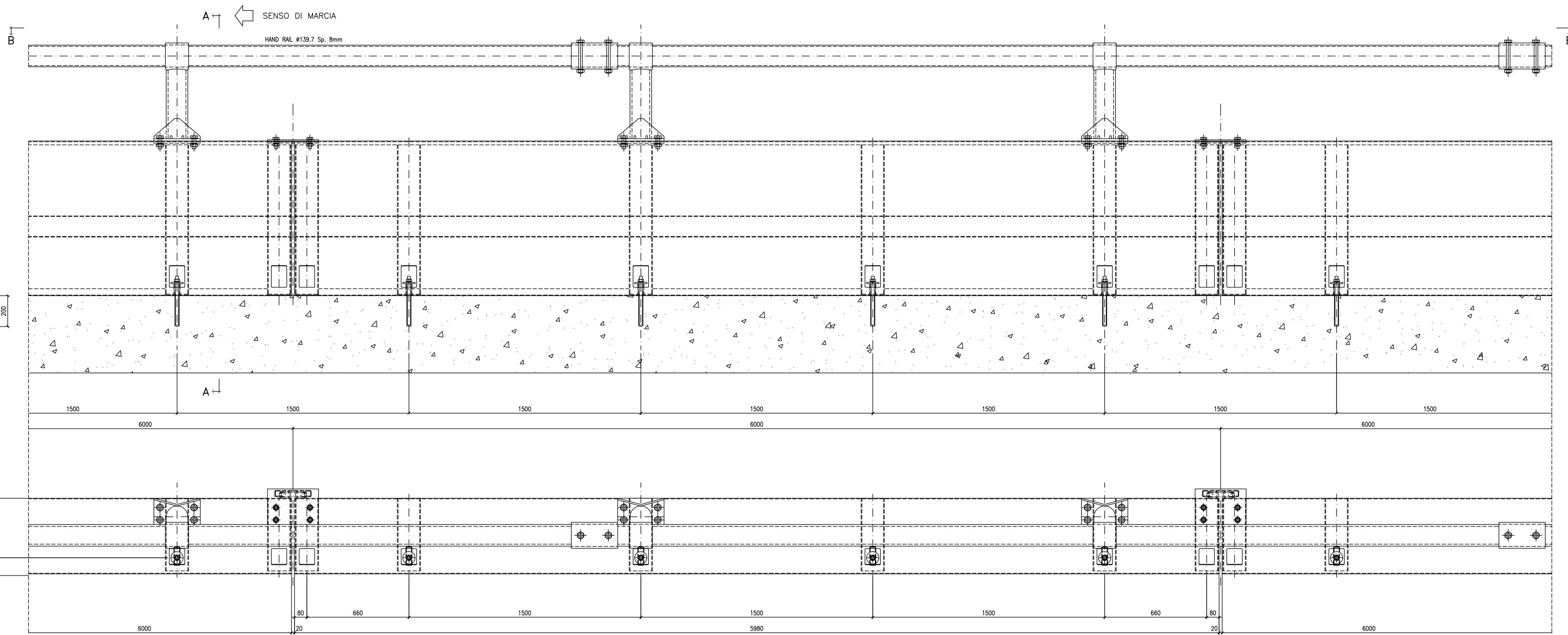


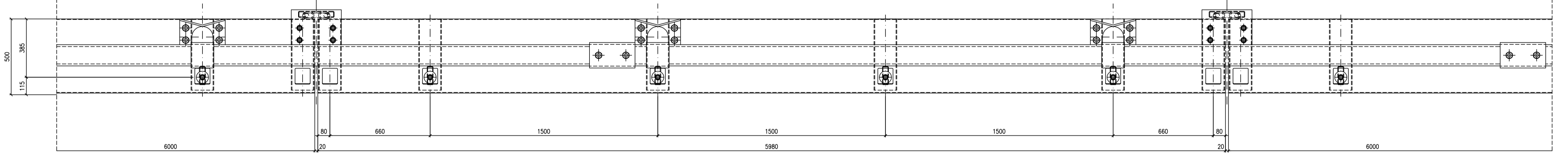
SECTION A-A



FRONT VIEW



VIEW B-B



**MATERIALI E NOTE:**

LAMIERE Sp. 4 mm.	Fe360B	UNI EN 10025/92
PROFILI IN TUBO E PERNI	Fe3620B	UNI EN 10025/92
BULLONERIA:		UNI 3740
VITI CLASSE 8.8		UNI 5737
DADI CLASSE 8		UNI 5588
ROSETTE CLASSE 4.8		UNI 6592-69
VITI CLASSE 10.9		UNI 5712
DADI CLASSE 8.8		UNI 5713
ROSETTE CLASSE C50		UNI 5714

**MATERIALS AND NOTES:**

SHEET Thk. 4 mm.	Fe360B	UNI EN 10025/92
SHEET Thk. 3 mm.	Fe360B	UNI EN 10025/92
PROFILES, PIPES AND PINS	Fe360B	UNI EN 10025/92
BOLTS AND NUTS:		UNI 3740
SCREWS CL. 8.8		UNI 5737
NUTS CL. 8		UNI 5588
WASHERS CL. 4.8		UNI 6592-69
SCREWS CL. 10.9		UNI 5712
NUTS CL. 8.8		UNI 5713
WASHERS CL. C50		UNI 5714

DOWELS: N° 4 TYPE LIEBIG ULTRA PLUS V20 (OR SIMILAR APPROVED)  
CORRUGATED WIRE NET MESH 30x30 Ø3 HOT GALVANIZED AND PLASTICIZED COLOR GREY

C		13-10-2000		systema
B		19-04-2000		systema
A				
REV.		DESCRIZIONE	DATA	NOTE
<p>SPACI NON INDICATI - TOLLERANZE DIMENSIONALI GENERALI: L &lt; 100mm = ± 0.17 mm 100-400 L &gt; 300mm = ± 0.25 mm - TOLLERANZA ANGOLARE ± 7°</p>				
		PROGETTO: PARAPET BARRIER FOR CRASH TEST IN MUNICH (GERMANY) CLIENTE: OFF2000 OGGETTO: STANDARD "NEW JERSEY" TYPE LG 6000mm		
DATA: 05-04-2000 SCALA: 1:10 CONTROLLO: [ ] DIS. N.: 05-04 TAVOLA: C REGIONE: B SCOTTIGLIE L. N.: [ ]		DATA: 05-04-2000 SCALA: 1:10 CONTROLLO: [ ] DIS. N.: 05-04 TAVOLA: C REGIONE: B SCOTTIGLIE L. N.: [ ]		
PROPRIETA' RISERVATA - QUESTO DISEGNO NON PUO' ESSERE RIPRODOTTO NE' COMERCIALI A TERZO SENZA AUTORIZZAZIONE SCRITTA DELLA SOCIETA'.				