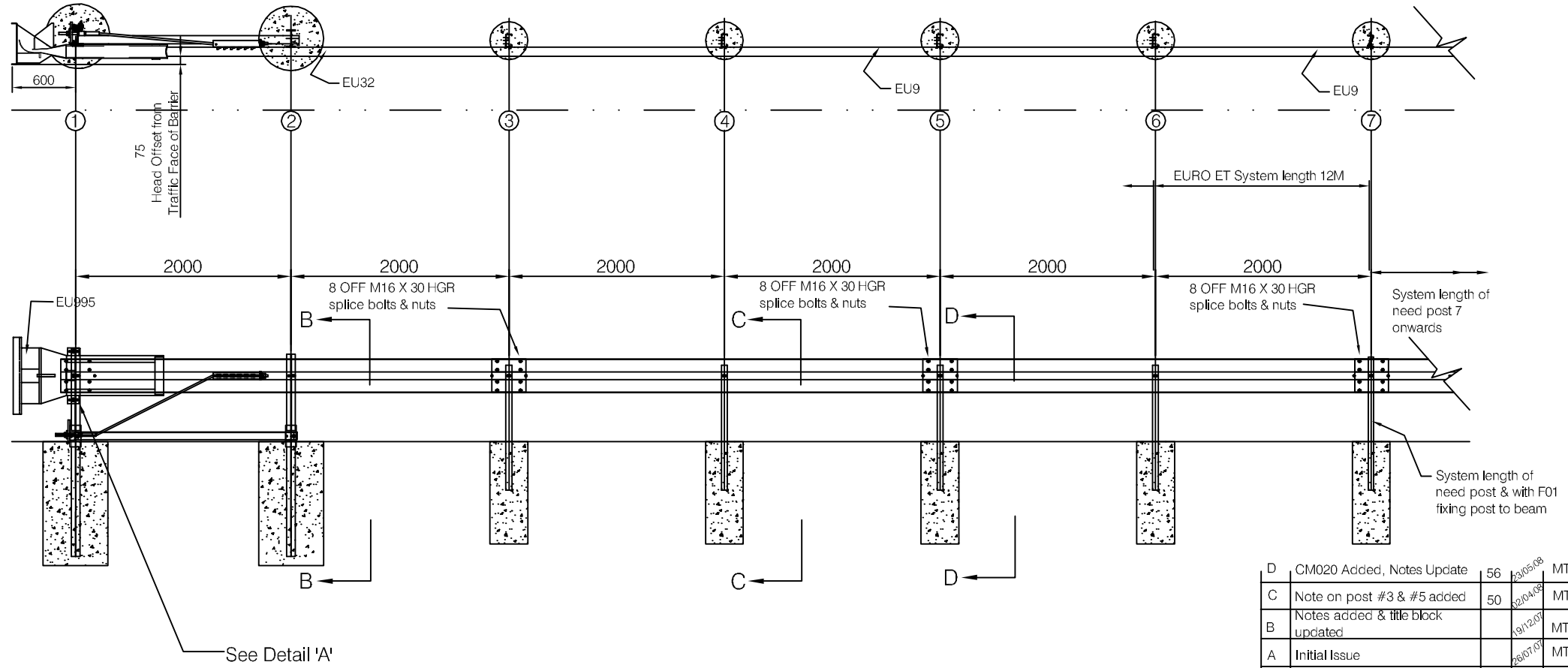


© Copyright.  
This drawing has copyright & may not be copied in whole or in part or used for any other purpose other than that for which it is supplied without express written consent from the company.



D	CM020 Added, Notes Update	56	23/05/08	MT
C	Note on post #3 & #5 added	50	02/04/08	MT
B	Notes added & title block updated		19/12/07	MT
A	Initial Issue		26/07/07	MT
Rev	Remarks	ECR	Date	Check

Drawn By	Date	Material
MMPeach	Jul 2007	
Scale	Finish	Weight
N T S		

Description  
**TRINITY**  
**EURO-ET - D1.3-Z1 P4**  
Corrugated Beam Terminal  
General Arrangement Details

**UNCONTROLLED WHEN PRINTED**

Springvale Business & Industrial Park,  
Bilston, Wolverhampton. WV14 0QL.  
Tel: (01902) 499400  
Fax: (01902) 499419  
**brifen**  
www.hill-smith.co.uk www.brifen.co.uk

Drawing No. **CT-GA-1002-1**  
Sheet 1 of 6 Sheets

- NOTES
1. This terminal must be installed in a straight line along its full length of 12M.
  2. If terminal is to be flared this must also be in a straight line along its length from post 1 to post 7 and must not exceed a 1 in 20 flare rate
  3. Dimensions in mm
  4. Do not attach posts #3 & #5 at the beam lap splices (see CT-GA-1002-4)
  5. F01 M8 x 35 Bolt Assy & F03 Washer not supplied in kit

Bill Of Material								
Pt No	Qty	Description	Pt No	Qty	Description	Pt No	Qty	Description
A21	4	200mm Reinforcing Ring	EU107	4	C Channel Posts C120	EU3718	1	20mm x 75mm High Strength Hex HD Bolt
A21a	2	375mm Reinforcing Ring	EU704	1	Cable Anchor Bracket	EU3900	2	24mm Washer
CT004	4	C Post Sockets	EU782	1	Bearing Plate	EU3910	2	24mm Hex Nut
CT012	1	Check Rope C/W 2 Shackles	EU995	1	Extruder Head	EU4254	8	10mm Washers
EU9	2	Standard Guardrail	EU3000	1	Cable Assembly	EU4258	8	10mm Lockwasher
EU32	1	Anchor Guardrail	EU3300	5	16mm Washer	EU4261	4	10mm x 40mm Hex HD Bolt
EU101	2	Flange Plate 5mm x 70mm x 100mm	EU3340	29	16mm Double Recess Nut	EU4699	4	20mm Lockwasher
EU102	1	Angle Strut 2062mm	EU3360	24	16mm x 30mm Guardrail Splice Bolts	EU6321	4	10mm x 50mm Hex HD Bolt
EU103	2	Post Stub #1 & #2	EU3400	5	16mm x 40mm Guardrail Post Bolts	EU6405	8	10mm Hex Nut
EU104	1	Post #1 Top	EU3701	7	20mm Washer	EU6668	2	Object Marker 300x300 Decal
EU105	1	Post #2 Top	EU3704	4	20mm Hex Nut	CM020	2	50 x 50 M10 Square Washer
EU106	4	Bracket U200	EU3717	3	20mm x 65mm High Strength Hex HD Bolt			